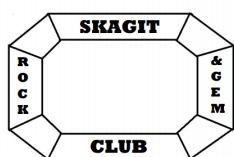




SKAGIT GEMS

SKAGIT ROCK AND GEM CLUB PO Box 244 MOUNT VERNON WA 98273

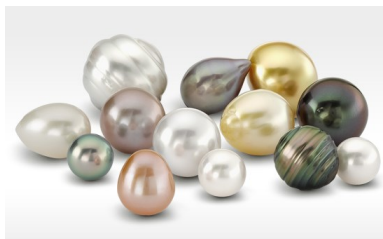
June 2015
Volume 55, Issue 5



Gem-of-the-month : Organic Material

Organic materials form a special group within the gem world. The common factor that ties them together and sets them apart is their origin. They all come from living organisms~ in other words, plants and animals.

Pearls are composed of numerous thin, concentric layers, which are deposited successively by the mollusk in an onion-like structure. To some extent, the older the pearl, the bigger it is, and the more numerous are the constituent layers. About 92 percent of pearl is calcium carbonate, in the form of aragonite crystals, held together by an organic substance (concholin), which is identical to the horny outer layer of oyster shells, plus a small quantity of water.



Amber is fossilized resin of pine trees that lived between 10 million and 125 million years ago. More than 1,000 different kinds of insects, flowers and seeds occur as amber inclusions. These were caught in the soft resin and encased when it hardened. Collectors pay high prices for such time capsules and scientists study them to learn about life in the distant past. Continued on page 4...

What's inside

President's Message	1
Meeting info	1
What's New	2
Meeting Minutes	3
Gem Article	4
Refreshment Schedule	4
Field Trips	5
Gem Shows	5
Club Info	6

President's Message

Everyone is welcome to a BBQ on Saturday June 13th at 12:00. (map insert) Burgers, hotdogs, and plates etc. will be provided. Bring a dish to share and what you want to drink.

You're Invited to a



There is a pool (age 21 and over) so bring your swimsuit and lawn chairs and relax. Call me with any questions 360-840-8342 or ask at the next meeting on June 6th.

Thanks, your President Eric Self

Next Meeting: June 6th 10:00am

June Gem-of-the-month : Organic Material

Bring your amber, coral, pearls, jet etc. to share





Kaleidoscope class

Susan May will teach a class using stained glass or sliced stone. Dates are July 18th and 25th. Cost is \$50.00 all materials included.



Marie-Claire's silversmith class is full for this session, but she may offer another one in the fall. Class dates are May 30th and June 20th from 10am-3pm.

She would like to teach class members, that want to, to do a twisted design made with square wire. If you are signed up and haven't spoken to Marie-Claire about your project please contact her asap. # 360-336-3776. Here are some examples she has made.



The club has been informed by a prior rock club member's family of rocks and equipment for sale.

Rocks - obsidian, Oregon polka-dot agate, thunder eggs (many cannon ball size!) plus lots of other miscellaneous rocks and shells.

Equipment -

Old style tumbler with four 10 lb. barrels with metal rim

12-14 (?) inch rock saw

Complete lapidary assembly - with 6 wheels

Two double-arbor stations for lapidary wheels

Suede leather polishing wheel (12"?)

Large kiln

Richardson's Ranch Dry Sander
and more!!!

Supplies - grits & polish



Also loads of ceramic molds and already molded ceramic pieces if you know anyone interested in ceramic stuff. Please talk to David at the club meeting June 6th for more information.

Board Meeting Minutes May 4, 2015

Meeting called to order at 9:35

Board members present: Eric Self, Dave Britten, Greg Hochmudt, Susan May, Linda Keltz, Virgil Keltz

The minutes of the last meeting were approved.

Dave Britten read the treasurer's report and it was approved.

Gem-of-the month for June is Organic Material

Meeting was adjourned at 10:00

-Submitted by Susan May, Secretary

Meeting minutes May 4, 2015

The meeting was called to order at 10:00 am

Guests were introduced: Landen Yepez and Peggy Peterson. Both won a guest prize. Thank you for joining us!

The minutes of the last meeting were accepted.

Dave Britten read the treasurer's report and it was accepted.

Eric Self brought his video again about formation of the Channeled Scablands in Eastern Washington and we watched the second half continued from last month.

Thank you to Nona Avery, Marie-Claire Dole and Marion Melville for the refreshments.

Old Business: We need prizes for the raffle case at our Gem Show in November.

New Business: Dave Britten will be teaching rock polishing May 16th and 25th. Susan May will teach a class on kaleidoscopes on July 18th and 25th. Cost for Susan's class is \$50.00 which includes materials. Marie-Claire's Silversmithing class is full.

Eric Self will host a BBQ Potluck at his house in Sedro-Woolley June 13th at 12:00.

Meeting adjourned at 11:00

-Submitted by Susan May, Secretary

Gem-of-the-month : Organic Material

Continued from front page...

Ivory is largely obtained from the tusks of African and Indian (Asiatic) elephants, but also from the teeth and tusks of the hippopotamus, walrus, and other mammals. Like bones, it consists mainly of calcium phosphate in the form of oxyapatite and a small quantity of calcium carbonate, bound together by large amounts of the proteinaceous organic substance dentine, to form a compact, elastic, tenacious whole.



Jet is an organic gem material composed of lignite, and is a bituminous coal which can be polished. It is compact, homogeneous, has a hard, glossy surface and black interior variety of fossilized lignite or coal. It was popular in Victorian England and used in mourning jewelry. One of the most famous jet-producing localities is near the community of Whitby on the eastern coast of England. Jet, as a form of coal, has a very low specific gravity. That makes a long strand of jet beads much lighter in weight than a similar-size strand of any other gem material except amber.

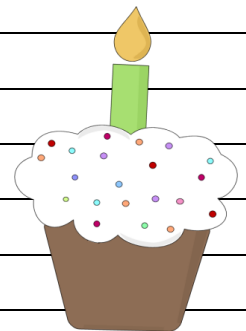


Coral in Processed & Rough Form

Corals are the supporting framework of small polyps. Each coral polyp, a tiny marine animal that lives in enormous colonies, extracts calcium carbonate from the sea and exudes it through their bases to build a protective home around and above itself. Each generation of polyps dies in its protective home and each succeeding generation builds on top of its predecessor. They precipitate calcareous material in their outer body wall and thus build reefs, atolls, and coral banks with many intertwining branches down to a depth of 300 meters. Only these branches are used for working as precious stones.

Article information found on Gem5.com

Refreshment Schedule			
April	Debbie Frank	Eric Self	
May	Nona Avery	Marie-Claire Dole	Marion Melville
June	Greg Hochmuht	Linda Keltz	Lee Tennefoss
July	Potluck + Swap Meet		
August	Susan May	Frank Isca	
Sept	Violet Munion	Francie Hansen	
Oct	Susan Conta	Linda Kantor	Angie Bossarte
Nov	Joanie Self	Travis Malone	Dave Britten
Dec	Xmas Potluck		



Bringing snacks is not mandatory, only if you are able

Field Trips

06/15	Spk	Emerald Creek 9:00 @ Emerald Creek Star Garnet Area, Idaho Star garnet Tweezers
06/21-24	Spk	McDermitt, NV Picture jasper, petrified wood, agate, thunder eggs Lt hard roc
06/25-28	POW	Madras, OR 8:00 @ Fairgrounds Petrified wood, agate, jasper , T-Eggs -\$1
07/10-13	HC	Clarkia, Idaho One day travel each way from Western Washington. Must join HC club to attend Large garnets, quartz crystals Dig & Lt hard rock tools
07/18	Dar	Darrington 11am @ show, Darrington Grange Travertine Lt hard rock tools
08/15-16	NWOS	Greenwater 9:00 @ Enumclaw Ranger Station Agate, Jasper Dig, Lt hard rock

Host Club Contact info

<u>Dar</u>	Darrington Rock Club Ed Lehman—wsmced@hotmail.com (425) 334-6282 or (425) 760-2786
<u>Msvl</u>	Marysville R & G Club Ed Lehman— wsmced@hotmail.com (425) 334-6282 or (425) 760-2786
<u>POW</u>	All Rockhounds Pow Wow Club of America Larry Vess –vessel3@comcast.net (253) 473-3908
<u>Elb</u>	Ellensburg Rock Club Steve Townsend—srtrocks@aol.com (509) 933-2236
<u>Spk</u>	Spokane Rock Rollers Mike Shaw— mikeshawmoose@yahoo.com— (509) 244-8542
<u>NWOS</u>	Northwest Opal Society Tony Johnson— (253) 863-9238 HC Hells Canyon Gem Club Dan Cease—rockmangem@q.com (509) 254-1720

Local Gem Shows

June 5th , 6th , 7th	Puyallup Valley Gem & Mineral Club Annual show Swiss Park 9205 198th Ave. E. Puyallup, WA
July 18th , 19th	Darrington Rock & Gem Club Rock and Gem Show and Sale Manford Grange 1265 Railroad Avenue Darrington, WA (behind IGA)
August 8th , 9th	Maplewood Rock and Gem Club Annual Rock and Mineral Sale Maplewood Rock and Gem Clubhouse 8802 196th ST SW Edmonds WA
August 14th,15th, 6th	Port Townsend Rock Club Annual Rock, Gem, & Mineral Show in conjunction with the Jefferson County Fair Jefferson County Fairgrounds 4907 Landers Street Port Townsend WA 98368
August 15th	Shelton Rock and Mineral Society 6th Annual Tailgate Rock Sale and Swap Meet Tailgate space \$15 Shelton Soccer Park 2102 E Johns Prairie Rd Shelton, WA To register contact Susan @ 360-275- 9432 or SRMS242@yahoo.com



Skagit Rock and Gem Club Info

President	Eric Self	360-840-8342
Vice President	Greg Hochmudt	360-873-4809
Treasurer	David Britten	360-755-0741
Secretary	Susan May	360-420-2572
Fed Director	Virgil Keltz	360-424-6525
Bulletin Ed	Debbie Frank	360-757-6276
Past President	Linda Keltz	360-424-6525

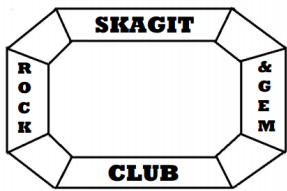
Standing Committees

Annual Show Chair	Open	Memorial Scholarship	755-9818	Nona Avery
Banquet	The Men		714-0054 -Don Phillips	293-4299
Classroom Visitation	Donald Phillips	Mineral Council & PLAC		Open
	Susan Conta	NFMS Competition		Open
Display Table	Open	Nominating Committee		Executive Board
Education Coordinator	Open	Program		Open
Facilities/Field Trips	Dave Britten	Publicity		Open
Greeter	Linda Keltz	Stamps	424-6525	Virgil Keltz
Library	David Britten	Sunshine	299-8794	Susan Conta
		Swap	856-1362	Danny & LaVonda Vandenburg
		Ways & Means		Executive Board

VISITORS ARE ALWAYS WELCOME

Meetings are on the FIRST Saturday of the month (except for Jan, July and Dec) at 10:00 am at the Mount Vernon Community (Senior) Center 1401 Cleveland St. Mount Vernon WA 98273

- The purpose of this non-profit earth society shall be to stimulate interest in the study of geology, lapidary, and the collection of geological specimens
- We are members of Northwest Federation of Mineralogical Societies and the American Federation of Mineralogical Societies
- Our Address: Skagit Rock and Gem Club PO BOX 244 Mount Vernon, WA 98273
- Contact Eric Self-President for more info: 1-360-840-8342



Skagit Rock and Gem Club

Debbie Frank, Editor

20379 Aliston Ln.

Burlington WA 98233

Where are YOU going rock hounding this Summer?

